

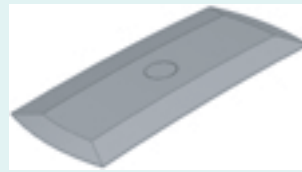
Metal Domes for Membrane Switches and Flexible Circuits

4 Leg



Wide Range of Sizes
6, 8.4, 10, 12.2, 16 & 20mm Available
150, 170, 200, 280, 320, 350, 400 & 450 gr Options
With or Without Dimple
Stainless Steel

Oblong



Wide Range of Sizes
18, 25, 38 & 51mm Available
280, 350 & 400 gr Options
With or Without Dimple
Stainless Steel

Round



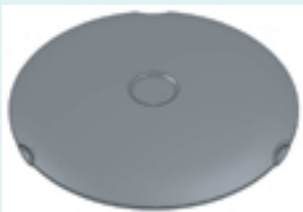
Wide Range of Sizes
3, 4, 5, 5.6, 6, 6.9, 8.8, 10.8, 12.7 & 16mm Available
180, 200, 240, 280 & 350 gr Options
Stainless Steel

Round with Dimple



Wide Range of Sizes
4, 8, 9, 10, 12 & 12.7mm Available
180, 240, 280, 350 & 400 gr Options
With Large Dimple
Stainless Steel

Round with Dimple & Feet



Wide Range of Sizes
6, 7, 8, 9, 10, 12, 12.7 & 13mm Available
150, 200, 240, 280, 350, 400, 480 & 750 gr Options
With Dimple & Feet
Stainless Steel

Triangle with Dimple & Feet



Wide Range of Sizes
5, 6, 7, 8, 9, 10 & 12mm Available
150, 160, 180, 200, 230, 280, 350, 400, 450 & 480 gr Options
With Dimple & Feet
Stainless Steel

Other styles of Domes & Dome Arrays also available
For Samples, Data or Quotation, please contact us

MEMCON Limited

Compass House Vision Park Chivers Way HISTON
Cambridge CB24 9AD United Kingdom
T +44 1223 257724 F +44 1223 257800
www.memcon.eu sales@memcon.eu

MEMCON (Asia) Limited

Level 7 Parkview Centre
7 Lau Li Street Causeway Bay Hong Kong
T +852 3741 1411 F +852 3747 8980
www.memcon.asia sales@memcon.asia